

C O N T R A C T



Philippe Roche (standing), Serge Rinvile and Patrick Chouchan, probably at the Cologne trade show.

A TALE OF TWO FAMILIES

Roche Bobois came into being when two families met each other by pure chance: the Roche family and the Chouchan family.

1950 : PARIS

In 1950, Jacques Roche purchased the former Alexandre Dumas theatre on rue de Lyon and developed two stores there. Philippe and François, his two sons, joined the company and together established the business development strategy. They began to distribute the leading specialists in French contemporary furniture with a strong Bauhaus inspiration, such as Minvielle, Steiner and Airbome, while also producing designs by renowned designers like Pierre Paulin and Marc Berthier. At the time, the Chouchan family sold their furniture in Paris on Boulevard Sébastopol, from their store "Au Beau Bois" (which would become Bobois).



1960 : THE MEETING

Copenhagen trade fair: discovering Scandinavian furniture. Philippe and François Roche attended the trade fair, as did Patrick and Jean-Claude Chouchan. Both duos wanted to import the furniture for distribution in Paris. They developed their first combined catalogue, thus creating a national franchise network. The adventure was off to a good start. In 1961, they conducted their first national advertising campaign in Elle magazine. The success of these advertisements showed the potential of combining these two names – Roche and Bobois – and triggered great sales growth. From that period on, Roche Bobois became a fully fledged brand.



1970 - 2000 : PIONEERING DEVELOPMENTS

The seemingly ubiquitous television set of the 1970s gave rise to a major transformation in the average home's layout: the sofa became an essential piece. It is central to the Contemporains collection.

In the early 1980s, Roche Bobois expanded its range by creating the Provinciales collection, which revisits traditional French furniture.

The 1990s, the trend of cultural diversity went hand-in-hand with the rise of ethnic furniture. Roche Bobois identified and addressed this new demand by creating the Voyages collection.

Roche Bobois saw two major developments as it entered the 21st century: international expansion with its showrooms cropping up in a rising number of prestigious cities across the world. And the development of highly creative partnerships with designers, architects and creators working with Roche Bobois to conceive and develop equally functional and aspirational furniture and objects, reflecting an approach to design based on living.

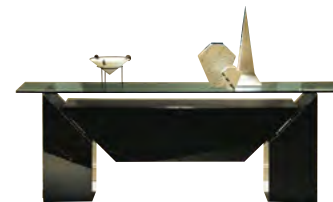
ROCHE BOBOIS TODAY

Roche Bobois currently operates in 50 countries through an international network of more than 250 showrooms. Roche Bobois is one of the only furniture distributors to have achieved successful international expansion while creating a trademark style aligned with customers' needs and desires.

60 YEARS OF ICONIC PIECES



1967
OZOO
design Marc Berthier



1983
BROOKLIN
design Luigi Gogoni



2001
MAH JONG
design Hans Hopfer



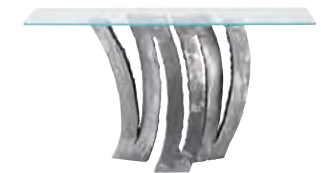
2013
ORA ITO
design Ora Ito



2019
PRIMORDIAL
design Raphael Navot



1971
LOUNGE
design Hans Hopfer



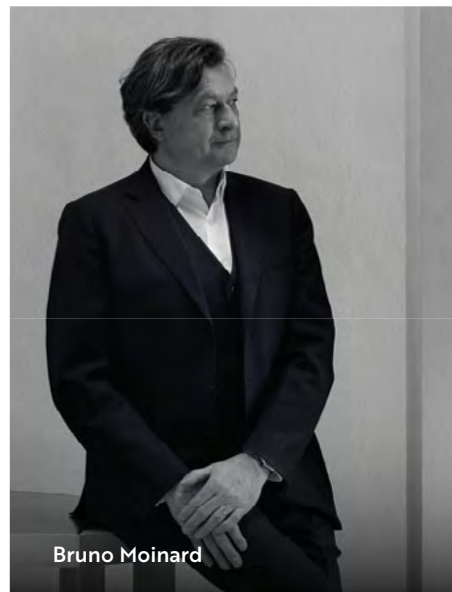
1990
FLEUR DE FER
design Maurice Barilone



2011
LEGEND
design Christophe Delcourt



2018
ZEPHYRUS
design Giacomo Garziano



Bruno Moinard



Ora Ito



Jean Nouvel



Paola Navone



Marcel Wanders



Jean Paul Gaultier



Raphael Navot



Stephen Burks



Kenzo Takada

THE DESIGNERS

FOR ROCHE BOBOIS

Designers, architects and established or emerging stylists all come together at Roche Bobois. These strong personalities combine creative imagination with artisanal expertise; they have chosen the art of living as their canvas of expression. They inspire Roche Bobois' French art de vivre: women and men who apply their talent to designing beautiful, innovative and smart furniture.



FURNITURE PRODUCTION

FROM INDIVIDUALS TO PROFESSIONALS

Since its creation, Roche Bobois has been developing exclusive collections for its network of showrooms and for use by individual customers.

Today, Roche Bobois applies its production expertise to serve professionals, project managers, architects, decorators and influencers via a dedicated Contract department.

Professionals can now rely on our assistance with all types of projects: residential, hotels, offices, real estate development, and more.

The Roche Bobois Contract service offers you special access to the brand's designs, while also helping you to select products and their finishes. Working closely with you, we advise you on interior layout options.

Production is carried out exclusively in our European workshops, which allows for fast lead times and customised materials, dimensions and finishes, in keeping with the Brand's quality and eco-design standards.

CONTENTS

SEATING

- 12 CHAIRS - DINING ARMCHAIRS
BAR STOOLS
- 44 ARMCHAIRS - SOFAS & OTTOMANS

FURNITURE

- 82 OCCASIONAL TABLES
COCKTAIL TABLES - BEDSIDE TABLES
- 106 DESKS - TABLES - CONSOLES
- 144 BEDS - HEADBOARDS
- 170 OUTDOOR

ACCESSORIES

- 194 LAMPS
- 226 RUGS
- 244 MIRRORS
- 256 COMPLETED PROJECTS
- 266 FAQ



SEATING

CHAIRS - DINING ARMCHAIRS
BAR STOOLS

BRIO

designed by Sacha Lakic

A



B



C



IDENTITIES

designed by Raphael Navot



A



B



D



C



E

Chairs in birch and base in solid oak. Fabric or leather upholstery.

A n°1 L50 H90 D62 h148
B n°2 L50 H81 D60 h148

C n°3 L50 H90 D62 h148
D n°4 L50 H108 D66 h148
E n°5 L50 H90 D62 h148



EDEN ROCK

designed by Sacha Lakic

019



Chair, dining armchair and bar stool with base in solid beech. Fabric upholstery.

A L55 H86 D58 h148
B L61 H86 D58 h148
C L51 H94 D49 h170
D L59 H86 D57 h148

rocheboboïs
CONTRACT



Chair, dining armchair and stool with base in stained or lacquered beech. Fabric or leather upholstery.

A L51 H92 D56 h148
B L59 H92 D56 h148

C L44 H103 D52 h178



PULP

designed by Eugeni Quitllet

023



Chair and dining armchair with structure in matte or glossy lacquered beech or in stained ash, padded shell in plywood with metal reinforcements and fabric or leather upholstery. Available in a pivoting version with central base of 4 black lacquered metal legs.

A & B	L61 H81 D58	h147	rocheboboïs CONTRACT
C	L50 H81 D58	h147	

CAIRN

designed by George Plionis et Weiran Chen



Chair in stained beech. Fabric upholstery. L55 H87 D61 h149

AVA

designed by Song Wen Zhong



Stackable dining armchair made of opaque, glossy or matte polyamide injection. Translucent polycarbonate injection version also available.

L60 H80 D57 h147

QUADRILLE

designed by Alnoor



A



Dining armchair and rocking armchair with base in stained solid beech. Fabric or leather upholstery.

A L62 H78 D62 h148



B



B L67 H72 D75 h147

STEEPLE

designed by Enrico Franzolini



Chair and dining armchair with beech structure. Fabric, leather or leather-effect fabric upholstery.

A L56 H77 D58 h141
B L56 H77 D58 h141



Bar stool, shell in beech with chrome-plated or black chrome-plated base, height-adjustable mechanism. Fabric, leather or leather-effect fabric upholstery.

C L48 H108 D53 h183

CHISTERA

designed by Marcelo Ziliani



Dining armchair and chair with shell in polished aluminium. Leather or leather-effect fabric upholstery. Central base with 4 legs and tilting mechanism.

A L63 H81 D53 h145
B L52 H81 D53 h145



Stool with shell and moulded claw in lacquered or glossy polished aluminium. Pivoting, height-adjustable seat. Base in lacquered or chrome-plated steel.

C L45 H78,5/101 D48 h159/81,5



FLYNN

designed by Studio Roche Bobois

033



A



B



Chair and bar stool with beech structure. Leather or fabric upholstery.

A L49 H89 D59 h152
B L45 H94 D57 h177

rochebobois
CONTRACT

GABY

designed by Xavier Delvallée



Chair with base in solid beech. Back-support rods in chrome-plated or lacquered steel. Leather or fabric upholstery. L52 H81 D58 h147

COLETTE

designed by Studio Giofra



Dining armchair with structure in bi- or mono-material padded birch. 4 legs in black lacquered steel or pivoting base in cast aluminium. A L57 H80 D72 h147 B L58 H80 D72 h146

FRONTLINE

designed by Antoine Fritsch & Vivien Durisotti



Dining armchair made from reinforced cold foam with steel structure. Fabric upholstery.

L58 H81 D63 h148

TOURNICOTI

designed by Antoine Fritsch & Vivien Durisotti



Dining armchair with shell padded with foam. Upholstered in fabric, leather-effect fabric or leather (many colours available). Base in stained or matte lacquered oak.

L53 H84 D60 h148



CELESTE

designed by Cédric Ragot

039



Dining armchair with structure in metal and cold foam. Fabric upholstery.
Removable cover.

L62 H74 D59 h147

rocheboboïs
CONTRACT

CIRCA

designed by Cédric Ragot



Chair in stained or lacquered beech. Fabric or leather upholstery. L49 H80 D57 H147

KOMPASS

designed by Roberto Tapinassi & Maurizio Manzoni



Dining armchair in stained or lacquered beech. Fabric or leather upholstery. L58 H81 D61 H146,5

CEO & RDV

designed by Sacha Lakic



A



B

Pivoting armchair with low or high backrest. Upholstered in fabric. Base in metal with glossy chrome-plated finish or black cast aluminium. With or without castors.

A L 65 H 120/125 D 72 h 145/55
B L 65 H 87/97 D 70 h 145/55

PULP

designed by Eugeni Quitllet



A



B



Pivoting armchairs with low or high backrest. Upholstered in fabric or leather. Structure in birch bentwood. Polished cast aluminum pivoting base with Tilt system.

A L 89 H 120 D 82 h 147
B L 89 H 83 D 79 h 143



SEATING

ARMCHAIRS - SOFAS & OTTOMANS

TILT

designed by Sacha Lakic



Armchair with metal base. Fabric upholstery. L65 H79 D74 h144

SPOUTNIK

designed by Sacha Lakic



Armchair with base in chrome-plated metal and black nickel. Fabric or leather upholstery.

A L73 H74 D74 h142
B L80 H102 D93 h142



AROBASE

designed by Antoine Fritsch & Vivien Durisotti

049



Pivoting armchair with position memory function, metal structure. Fabric upholstery only.

L89 H71 P86 H140

rocheboboïs
CONTRACT

NUAGE

designed by Roberto Tapinassi & Maurizio Manzoni



Pivoting armchair with automatic return function. Fabric or leather upholstery. Base in lacquered or chrome-plated metal.

L91 H67 D84 h134

LADY B

designed by Cécile Maïa Pujol



Armchair with structure in wood and recycled foam. Fabric upholstery.

L84 H90 D67 h145

TEMPUS

designed by Simon Reynaud



Armchair in stained solid beech with lumbar cushion. Fabric or leather upholstery. L81 H68 D81 h138

MEDIANE

designed by Sacha Lakic



A



B

Armchair with fabric or leather upholstery. Metal base in matte bronze or matte golden bronze finish.

A L132 H66 D79 h143
B L68 H66 D79 h143



WALRUS

designed by Raphael Navot

055



Armchair with legs in solid walnut. Fabric upholstery. L82 H72 D73 H142

rocheboboïs
CONTRACT

DOT

designed by Raphael Navot



Pivoting armchair with automatic return function. Fabric upholstery. L84 H73 D77 H143

EDITO

designed by Sacha Lakic



Pivoting armchair with automatic return function. Upholstered in Roche Bobois exclusive Techno 2D, 3D or 4D fabric or in leather. L69 H66 D76 H140

APEX

designed by Sacha Lakic

059



Ottomans with seat padded with foam. Fabric upholstery. L48 H45 D46

rocheboboïs
CONTRACT

TRILOGIE

designed by Sacha Lakic



Ottomans with one-piece seat in foam. Fabric or leather upholstery. **A** L109 H38 D50 **B** L44 H51 D39 **C** L56 H45 D38

HIPPO, PARROT, GRAIN, GIZMO

designed by Raphael Navot



Ottomans with one-piece seat in foam. Fabric upholstery. **A** L122 H40 D40 **B** L36 H49 D42 **C** L47 H51 D39 **D** L38 H48 D31



SENSE

designed by Studio Roche Bobois

063



A



B

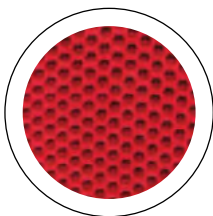
Modular sofa with padded seat and back.
Leather or fabric upholstery.

A L240 H75 D107 h138
B L381/190 H75 D107 h138

rochebobois
CONTRACT

BUBBLE

designed by Sacha Lakic



Fully padded sofas, armchairs and ottomans. Upholstered in Roche Bobois exclusive Techno 2D, 3D or 4D fabric.

A L236 H76 D114 h138
B L248 H80 D132 h138

C L189 H38 D90
D H35 Ø80
E L92 H68 D91 h137
F H36 Ø126

BUBBLE MINI

designed by Sacha Lakic



Fully padded sofas. Upholstered in Roche Bobois exclusive Techno 2D, 3D or 4D fabric. L177 H77 D99 h138

BLOGGER

designed by Roberto Tapinassi & Maurizio Manzoni



A



B

Sofa and armchair with padded seats and backrests.
Fabric or leather upholstery. A L240 H67 D104 h141
B L102 H67 D104 h141



ODEA

designed by Roberto Tapinassi & Maurizio Manzoni

069

A



B



Sofa and armchair with padded seat and backrest.
Fabric or leather upholstery.

A L250 H70 D95 h140
B L110 H70 D95 h140

rocheboboïs
CONTRACT

PLAYBACK

designed by Maurizio Manzoni



Sofa with cradle frame in matte black varnished metal. L256 H77 D98 h142
Leather or fabric upholstery

LOBBY

designed by Cédric Ragot



A



B



Sofa and armchair with cradle frame in varnished metal.
Leather and/or fabric upholstery.

A L240 H70 D92 h140
B L100 H70 D92 h140



INFORMEL

designed by Hans Hopfer

073

A



B



Sofa and armchair with padded seats, backrests and armrests.
Fabric upholstery.

A L236 H71/86 D103 h138
B L107 H71/86 D103 h138

rocheboboïs
CONTRACT

PARIS PANAME

designed by Bruno Moinard



A



B



C

Modular element sofa, straight or curved. Many elements available in several colours. Crossbar metal base.

A L454 H77 D156 h144
B L217 H77 D156 h144
C L117 H77 D95 h144

HYAGO

designed by Antoine Fritsch & Vivien Durisotti



A



B

Sofa and lounge chair with a metal and poplar structure. Fabric upholstery.

A L240 H76 D95 h142
B L180 H76 D95 h142

EDEN ROCK

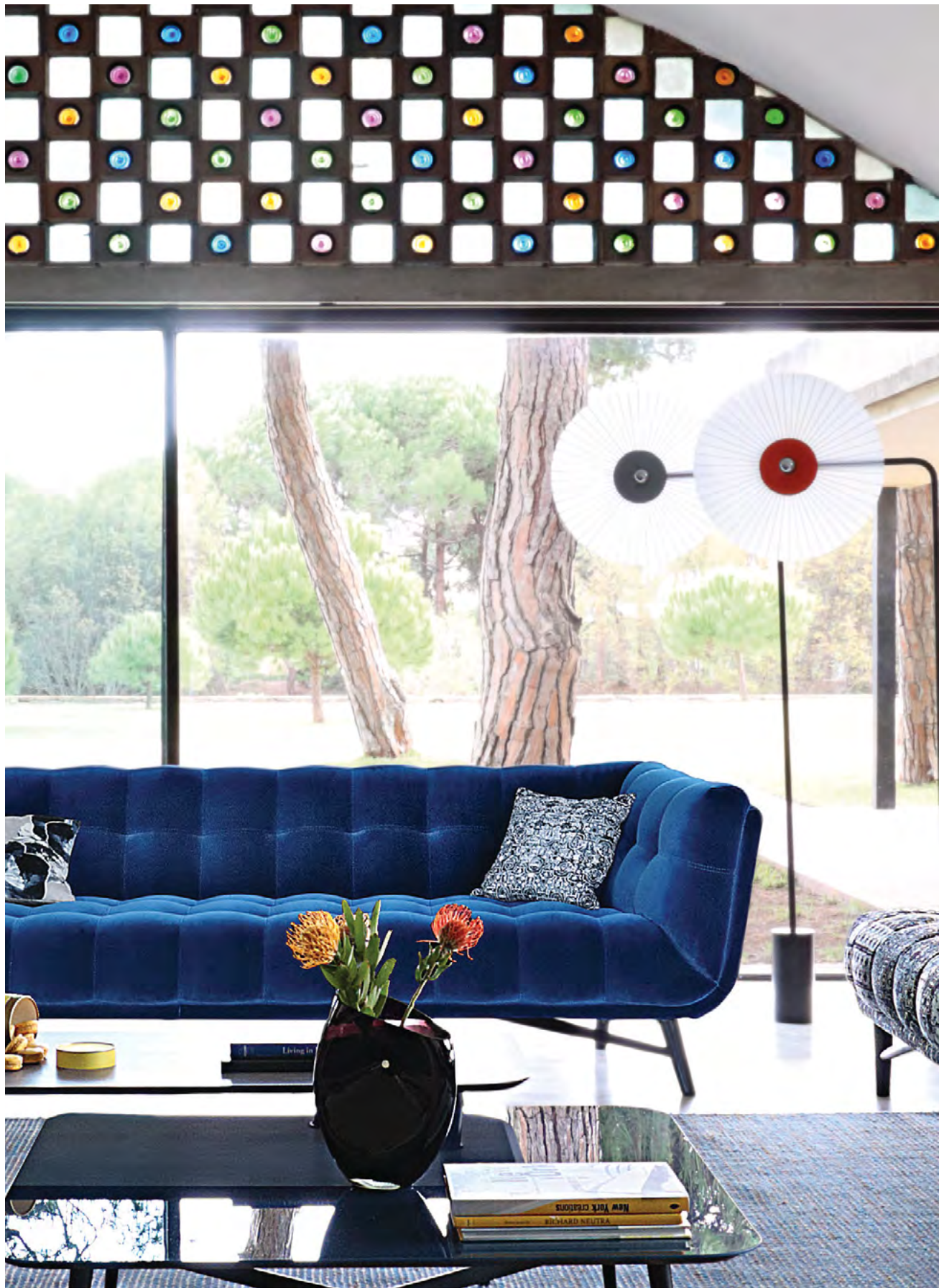
designed by Sacha Lakic



Sofa, armchair and ottoman with solid cherry wood legs, brass-tipped as an option. Fabric or leather upholstery.

A L76 H79 D81 h142
B L145 H79 D148 h145

B L145 H79 D81 h142
C L163 H45 D55 h145



PROFILE

designed by Roberto Tapinassi & Maurizio Manzoni

079



Sofa, armchair and ottoman with base in stained solid beech Padded seat, back and armrests. Fabric or velvet upholstery.

A L 279 H 76 D 95 h143
B L 199 H 76 D 95 h143
C L 159 H 76 D 95 h143
D L 222 H 43 D 83 h143

rochebobo
CONTRACT

MAISON LACROIX

designed by Christian Lacroix Maison



Sofa with seat cushions that have removable slipcovers. Fabric upholstery. L228 H83 D112 h145

MONTGOLFIERE

designed by Marcel Wanders



A



B

Sofa and ottoman. Upholstered in fabrics designed by Marcel Wanders. Metal legs with bronze finish.

A L240 H75 D115 h141
B L203 H41 D70 h141



FURNITURE

OCCASIONAL TABLES
COCKTAIL TABLES
BEDSIDE TABLES

NENUPHAR

designed by Greta Macri & Efrem Bonacina



Cocktail tables in white Carrara marble or Alpine Grey marble on a tripod base in grey or black lacquered steel.

A H35 Ø80 C H45 Ø45
B H40 Ø65

BILBOQUET

designed by Kateryna Sokolova



Cocktail and pedestal tables with top in coloured solid or blown glass. Structure in black lacquered steel, feet with black chrome or matte bronze finish.

A H40 Ø70 C H32 Ø59
B H50 Ø53 D H40 Ø35



CHESS

designed by Marcel Wanders

087



Cocktail tables in fibreglass and lacquered polyester resin (many finishes available).

A H60 Ø44 C H35 Ø90
B H48 Ø50

rocheboboïs
CONTRACT

PATCHWORK

designed by Raphael Navot



A



B

TV bench and cocktail table with top in walnut or oak marquetry.

A L220 H30 D50
B L180 H30 D66

MAYA

designed by Stefano Bigi



A



B

Cocktail tables with base in solid American walnut and top in bronze smoked glass.

A L60 H50 D75
B L105 H34 D105



QUINTET

designed by Maurizio Manzoni

091



Cocktail tables with irregular pentagon-shaped top
(many finishes) and base in black lacquered steel.

A L80 H44 D69
B L119 H39 D84

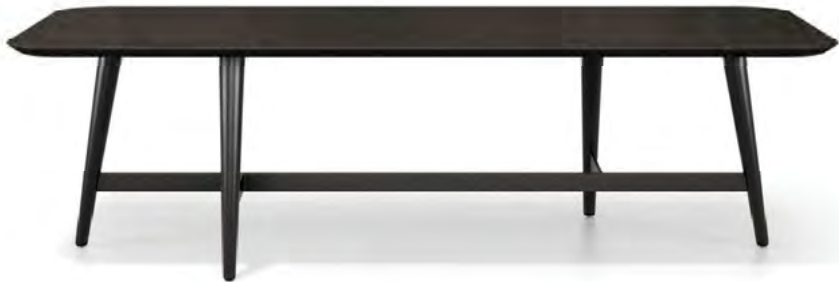
rocheboboïs
CONTRACT

OCTET

designed by Roberto Tapinassi & Maurizio Manzoni



A



B



C

Cocktail tables with base in black lacquered steel and top available with many finishes.

A L130 H39 D60
B L105 H30 D105
C L220 H49 D52

CROQUET

designed by Dmitry Samygin



A



B

Cocktail tables with structure in black lacquered steel and top in Marquina marble.

A L43 H58 D43
B L110 H38 D110

OVNI UP

designed by Vincenzo Maiolino

► INDEX



A



B



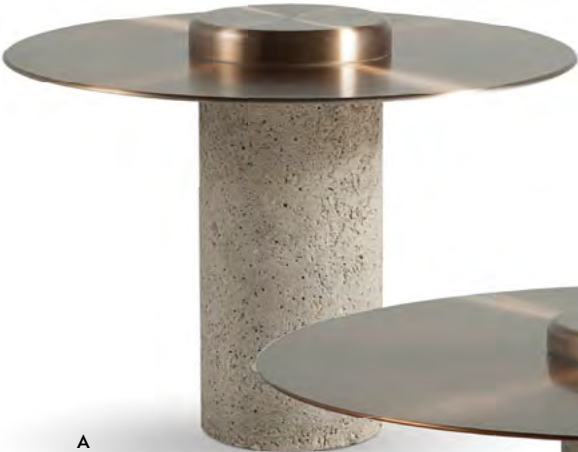
C

Cocktail tables in natural aluminium with a transparent or coloured varnish. Top in clear or smoked tempered glass. Base in lacquered steel.

A H29 Ø122 C H29 Ø70
B H29 Ø90

CANOTIER

designed by Joel Escalona



A



B

Cocktail tables with top in turned aluminium and coloured varnish. Base in sandblasted concrete and varnish.

A H45 Ø55
B H37 Ø99



COIN

designed by Dmitry Kosinenko

097



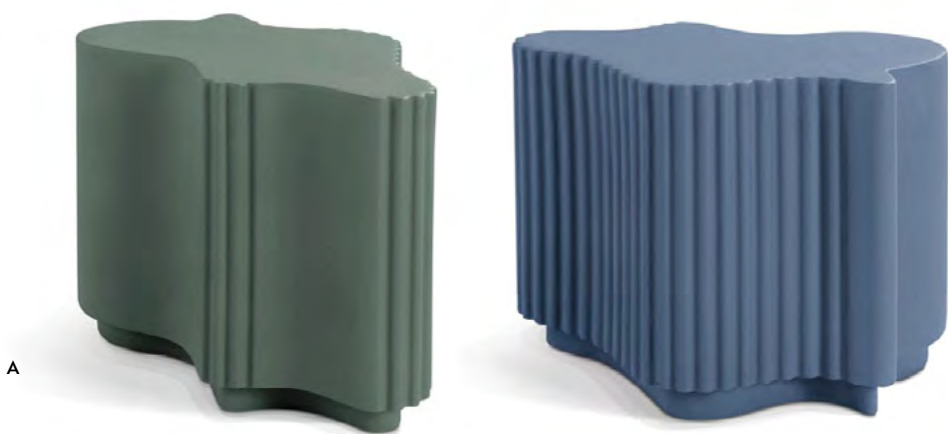
Cocktail tables in matte lacquered sheet metal, outer rim upholstered in fabric or leather. Legs in matte lacquered steel.

A H40 Ø65 C H60 Ø45
B H31 Ø95

rocheboboïs
CONTRACT

DEFORMA

designed by Linde Derickx



A



B

Pedestal table and end table in moulded granite-effect ceramic (many colours available).

A L65 H47 D40
B L60 H54 D37

BOW

designed by Piks Design



B



A

C

Cocktail tables with base in stained solid oak or brown acacia with a satin varnish or cast aluminium finish. Polished or lacquered aluminium top (many colours).

A H45 D40 C H40 D60
B H60 D40



RADIAN

designed by Cédric Ragot

101



Occasional tables in enamelled ceramic (many colours available).

A H44 Ø40
B H35 Ø50

rocheboboïs
CONTRACT

BIJOU

designed by Fabrice Berrux



Cocktail tables with structure in steel threads (many finishes available) and top in marble or natural or coloured antique glass.

A H54 Ø40 C H40 Ø90
B H47 Ø65

WATERLINE

designed by Cédric Ragot



Occasional tables in moulded ceramic with double enamelling in opaque white / glossy colour (many colours available).

H48 Ø37

EDEN ROCK

designed by Sacha Lakic



Cocktail tables in cherry wood with marble top. Brushed brass inserts and tips.

A L66 H55 D66 C L140 H40 D89
B L44 H76 D44

COLORADO

designed by Fabrice Berrux



Tables basses avec plateaux en placage de noyer et pieds en noyer massif. Base en marbre.

A H54 Ø40
B L123 H44 D85



FURNITURE

DESKS - TABLES - CONSOLES

MELT

designed by Cédric Ragot



Desk with structure in lacquered, chrome-plated or anodised polyester fibre. Top in black lacquered glass. Three-drawer pedestal with oak veneer push-to-open mechanism. L197 H75 D87

FURTIF

designed by Daniel Rode



Desk with structure in lacquered MDF (many colours) with cable hole. Can be disassembled. Separate 3-drawer pedestal. A L175 H72 D85 B L61 H63 D50



EDEN ROCK

designed by Sacha Lakic

111



Desk in solid cherry wood, top with vinyl coating, brushed brass handles and tips.

L144 H87 D75

rocheboboïs
CONTRACT

PARK LANE

designed by Studio Roche Bobois



Top in stained Tilia veneer. 2 drawers. Electric accessories (power outlet and USB port, wireless charger) and mobile phone holder. Base in solid sycamore and handles in brass and sycamore.

A L145 H78 D65
B L40 H60 D45

PARIS PANAME

designed by Bruno Moinard



Desk with brushed brass structure. Sycamore veneer top. One drawer on the right, one storage unit with right-hinge flap top.

L142 H79 D62

SCRIBE

designed by Studio Giofra



Desk with single small drawer. Structure and drawer in black lacquered steel. Top and shelf in split leather.

L110 H81,5 D60

TANGO

designed by Joëlle Rigal



Two-drawer desk, structure in stained solid oak with satin varnish, top in anigre veneer or leather.

L125 H83 D52

DEVOM

designed by Sandra Demuth



A



B



Console and desk with 2 drawers, matte lacquer finish, base in stained solid oak. Many finishes available.

A L100 H85 D40
B L125 H77 D55

STYLO

designed by Ivan Vasylchenko



Desk with structure in steel with bronze lacquer finish, partially upholstered in leather-like fabric, col. black. Top in reconstructed veneer, brown stain, and storage unit with drawer with matte lacquer finish.

L126 H90 D64

CORAIL

designed by Fritsch & Vivien Durisotti

119



Dining table with base in 3D-printed concrete (UHPC), customisable shape and texture. Bottom plate in epoxy lacquered steel, top in 15mm-thick tempered glass.

H73 Ø160

rocheboboïs
CONTRACT

TRACK

designed by Luigi Gorgoni



A



B



C

Tables with MDF top with grooved oak veneer and a stained or lacquered finish (many colours available). Base in epoxy lacquered steel.

A H75 Ø148
B L65 H75 D65

C L220/269 H75 D105

OPTIMUM

designed by Studio Roche Bobois



A



B

Console and table with top in oak or walnut veneer, or in MDF with a concrete patina finish (several colours available). Base in lacquered steel.

A L130 H75 D35
B L200/300 H74 D110

AQUA

designed by Fabrice Berrux



A



B

Round dining table with central base in solid Carrara marble or solid Bardiglio (matte or glossy polished finish), top veneered with Fenix® laminate (black, white or grey).

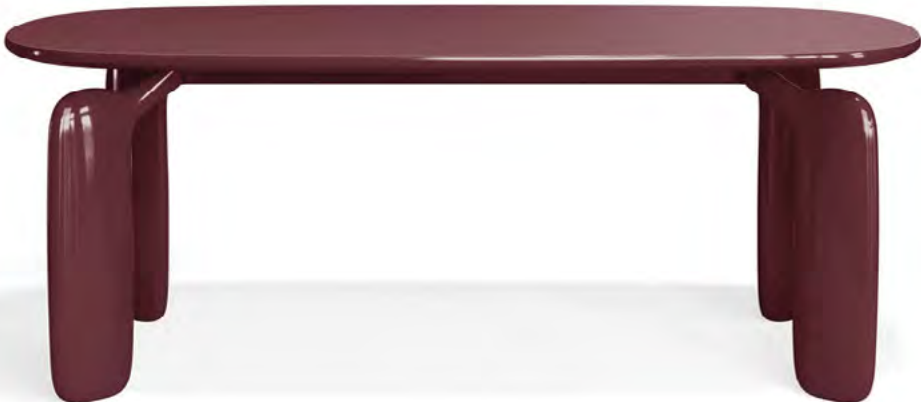
A L250 H75 D125
B Ø158 H75

PULP

designed by Eugeni Quitllet



A



B

Dining table, base in solid beech, top with stained beech veneer.
Dining table, base in reinforced polyurethane, upper top in Fenix® laminate, edges in glossy lacquer.

A L300 H75 D100
B L200 H75 D100



PULP

designed by Eugeni Quitllet

125



A



B

Dining table / desk with 3 legs. Top in laminated Fénix® and edges in glossy lacquer with legs in reinforced polyurethane.

A L256 H75 D147
B L220 H75 D127

rocheboboïs
CONTRACT

ASTER

designed by Reda Amalou

► INDEX



A



B



C

Dining table, 12mm-thick clear tempered glass top, base in natural or stained solid oak.

A H75 Ø80
B H75 Ø100

C L240 H75 D130

JANE

designed by Christophe Delcourt



A



B



Tables with tripod base in solid oak with steel or brass patina on the outer sides. Other dimensions available.

A L250 H75 D110
B H75 Ø120

rocheboboïs
CONTRACT

MAYA

designed by Stefano Bigi



Console with base in solid walnut and top in smoked glass.

L135 H75 D40

CROQUET

designed by Dmitry Samygin



Console in black lacquered steel and top in Marquina marble.

L100 H75 D34

JALOUSIE

designed by Alexandre Dubreuil

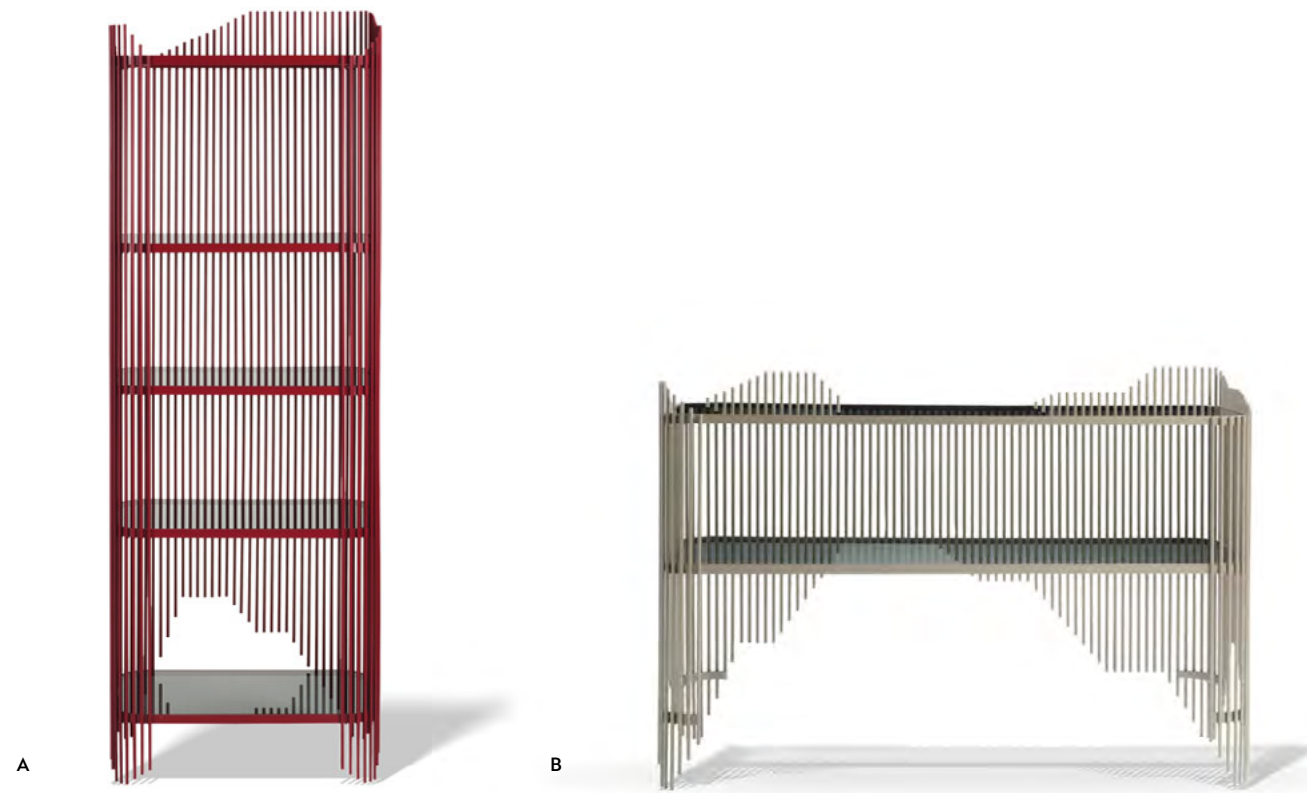


Console and bookcase in vertical strips of solid wood and shelves in oak veneer (many stains available). Base topped with Carrara marble.

A L130 H102 D40
B L160 H210 D40

NOISE

designed by Cristián Mohaded



Column unit and console in steel threads welded around framed shelves, epoxy lacquer finish (many colours available). Smoked glass top.

A L52 H186 D42
B L120 H80 D42



EDEN ROCK

designed by Sacha Lakic

133



A



B



C

China unit, bar units and bar in cherry wood. Top available in 5 finishes. Brushed brass inserts, handles and feet.

A L60 H148 D64
B L130 H150 D58

C L65 H98 D65

rocheboboïs
CONTRACT

EDEN ROCK

designed by Sacha Lakic

A



B



Cherry wood bar units. Top in bronze tempered glass (A), marble or ceramic (B). Brushed brass detailing, footrest and base plate.

A L140 H106 D66

B L193 H87 D99

RIO IPANEMA

designed by Bruno Moinard



Console with top in defibrated oak veneer on MDF and base in defibrated solid oak (many stains available). L150 H80 D40

SHARK

designed by Studio Juam



A



B

Consoles with legs in solid stained ash (many stains available) and top in 12 mm-thick grey smoked glass.

A L120 H84 D42
B L140 H84 D42



PATCHWORK

designed by Raphael Navot

139



Console with top in walnut or oak marquetry (many stains available). L140 H75 D44

rocheboboïs
CONTRACT

ROLLER

designed by Toni Grilo



A



B

Bar in walnut veneer (natural or stained) on MDF with 2 revolving doors, 4 shelves, legs in solid beech with a matte or glossy lacquer (9 colours).

A L80 H167 D40
B L130 H148 D55

CACHE-CACHE

designed by Studio Roche Bobois



B



Sideboards with integrated retractable TV system activated remotely.

A L157 H72 D46
B L210 H72 D76

GOURMET BAR FAUCHON

designed by Sacha Lakic



Bar unit with structure in lacquered, water-repellent MDF, 2 doors with a diamond pattern, 2 shelves per door. 2 interior niches: central niche with 2 holes, upper niche with LED lighting. Interior storage unit with 3 drawers, 1 with lock + front for bar fridge. Base with black lacquered metallic grill. Cornice with metallic grill for ventilation.

L63 H170 D59



FURNITURE

BEDS - BEDSIDE TABLES
CHEST OF DRAWERS

BACKSTAGE

designed by Roberto Tapinassi & Maurizio Manzoni



Headboard made of vertical panels, including 4 articulated side panels, in fabric and leather (many upholsteries available). Asymmetrical bed frame or bed frame including storage and lifting system (optional).

L178/306 H125 D220

BUBBLE

designed by Sacha Lakic



Bed with fabric upholstery. Headboard with bi-density foam 35-23 kg/m³. Bed frame with foam 35 kg/m³. Structure in solid fir wood, pine plywood and engineered composite wood. Base in solid beech with wenge colour varnish.

L202 H90 D266



CONTRE-JOUR

designed by Studio Roche Bobois

149



Wingback headboard and bed frame with fabric upholstery. Legs in aluminium with a black nickel finish.

L177 H107 D215

rochebobois
CONTRACT

COURCHEVEL

designed by Philippe Bouix



Modular headboard or complete bed. Adaptable in length and height, depending on the number of padded panels. Optional integrated bedside table with flap opening and reading lamp. Available in leather and Ecopelle.

L270 H151 D224

CHERCHE MIDI

designed by Eric Gizard



Bed with leather upholstery. Headboard with topstitched pattern and wingbacks in nubuck leather on the outer sides. Available with or without bedside table and lamp (angled, with black shade).

L262 H120 P229

MAH JONG

designed by Hans Hopfer & Marco Fumagalli



Platform and legs in Alpi© veneer on particle board with frame in solid beech. Lacquered single-drawer bedside unit. Tufted and padded headboard.

L230 H114 D248

PROFILE

designed by Roberto Tapinassi & Maurizio Manzoni



Fully padded bed frame and headboard. Many colours available. Stained wood legs.

L195 H118 D246



EDEN ROCK

designed by Sacha Lakic

155



Bed upholstered in fabric with padded back and sides in bi-density foam and cotton batting. Base in stained beech with brass-tipped legs.

L199 H118 D232

rocheboboïs
CONTRACT

EDEN ROCK

designed by Sacha Lakic



A



B



C

Bedside tables and chest of drawers, structure in stained solid cherry wood. Top in wood, ceramic or Carrara marble, drawers in cherry wood and Ecopelle. Detailing and leg tips in brushed brass.

A L61 H57 D40
B L79 H57 D40

C L177 H77 D58



D



E

D L170 H137 D45

Dressing table, structure in MDF with cherry wood veneer, legs in solid cherry wood. LED-backlit mirror, top and shelf in bronze tempered glass. Detailing and leg tips in brushed brass.

E L73 H77 D53

Armless chair upholstered in fabric, structure in structure in multiply pine and poplar plywood. Polyurethane foam and polyester batting for stuffing.

PARIS PANAME

designed by Bruno Moinard

159



Headboard and bed frame with fabric upholstery. Base in metal with brass finish.

L322 H122 D243

rocheboboïs
CONTRACT

PARIS PANAME

designed by Bruno Moinard



A



B



C



D

A L110 H195 D61
Wardrobe in MDF with defibrated ash veneer, leather-lined door, three adjustable wooden shelves, one rod, interior mirror. Gold-tone stainless steel legs.

B L40 H60 D30
Bedside table in defibrated ash veneer, leather-lined interior with two shelves, top and base in 10mm-thick bronze glass with gold-tone stainless steel detailing.

C L120 H135 D43
Vanity with gold-tone stainless steel structure, top in defibrated ash, 1 lacquered drawer with bluemotion metal rails, 1 bevelled round mirror.

D L180 H80 D57
Chest of drawers in MDF with defibrated ash veneer, three drawers and one door in ash veneer, leather-lined interior. Gold-tone stainless steel legs.

SCALA

designed by Bina Baitel



Two-door cupboard, structure in oak veneer plywood with edges stained dark grey. Two adjustable shelves in smoked bronze acid-etched glass and one fixed wooden shelf. Solid oak feet.

L95 H179 D47

ASTRAGALE

designed by Bina Baitel



Cupboard in MDF panels with solid beech moulding, lacquered (many colours available). Two doors, four adjustable wooden shelves and two fixed shelves in the centre. Beech feet.

L95 H180 D47

CLIC

designed by A+A Cooren



Pedestal table with rotating top and induction charging system. Interior storage compartment with USB port.

L41 H50 D35

PASTEUR

designed by Johan Lindsten



Pedestal table with adjustable diffuser in lacquered aluminium. Structure in lacquered steel. Marble base.

L41 H127 D40

GLOBO

designed by Studio Roche Bobois



Bedside table and tall chest of drawers in MDF coated with lacquered glass (many finishes available).

A L50 H42 D48
B L53 H140 D48

DEVOM

designed by Sandra Demuth



Bedside table, 1 drawer with push-to-open mechanism, base in stained oak and storage unit with matte lacquer finish. Many finishes available.

A L55 H45 D40
B L125 H76 D50

OCTET

designed by Roberto Tapinassi & Maurizio Manzoni



A



B

Bedside tables with lacquered drawers, top (7 finishes) and base in black lacquered steel.

A L49 H49 D49
B L58 H53 D50

RONDO

designed by Studio Roche Bobois



A

B

C



D

Bedside tables, chest of drawers and writing desk in MDF with a lacquer or Alpi® veneer, top available in matte lacquer, Alpi® veneer or ceramic. Legs in black chrome-plated steel.

A L126 H74 D46
B L54 H52 D46
C L54 H35 D46
D L126 H115 D46



OUTDOOR

ANGEL

designed by Silvana Angeletti & Daniele Ruzza



Sofa and armchair with tubular structure in lacquered aluminium (3 colours available), seat and back cushions upholstered in fabric (4 outdoor upholstery options).

A L175 H78 D88
B L97 H78 D88



Includes a kit with two leg heights (H. 30 and H. 45 cm).

Dining table, cocktail table and dining armchair with tubular structure in lacquered aluminium (3 colours available), top in lacquered steel or glass (3 colours available).

C L213 H75 D103
D L58 H78 D58
E L90 H35/45 D90

TRAVELER

designed by Stephen Burks



A



B



C



B



D

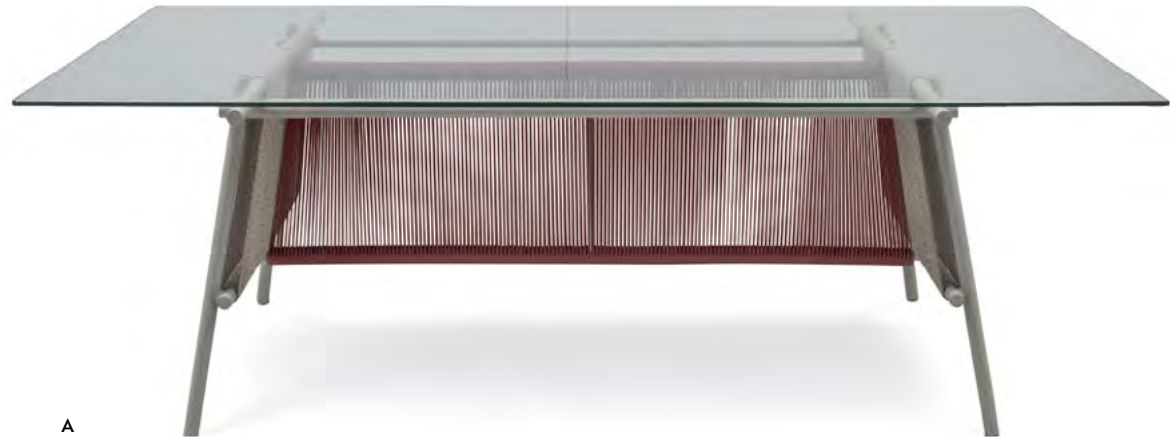
Sofa, armchair and lounge chair, tubular structure in lacquered aluminium. Braiding in polyethylene resin or polypropylene rope. Three colourways available: coral, red and yellow / grey, white and cobalt blue / mouse-grey, beige and brick.

A L130 H150 D126
B L105 H100 D100

C L216 H85 D110
D L115 H142 D214

TRAVELER

designed by Stephen Burks



Dining tables, cocktail tables and dining armchair with a structure in epoxy lacquer and polyethylene threads, in perforated aluminium sheet metal, lacquer or glass. Three colourways available.

A L220 H75 D100 C L62 H84 D64
B H74 Ø150 D H42 Ø65



ESCAPADE

designed by Zeno Nugari

179



Outdoor sofa with back cushions that can be arranged freely.
Other dimensions and an indoor version available.

L228 H73 D120 H137

rocheboboïs
CONTRACT

ECHOES OUTDOOR

designed by Mauro Lipparini



A



B

C

A L240 H75 D110

Octagonal dining table with a composite ceramic top on glass. Steel base with epoxy-lacquered outdoor protection.

B L220 H45 D35 **C** L260 H50 D35

Bench with aluminium slats and steel base with epoxy-lacquered outdoor protection. Cushions (optional) in Dryfeel foam and outdoor fabric.

CHISTERA OUTDOOR

designed by Mauro Lipparini



A



B

Dining armchair and chair, aluminium seat and back piece on steel base with outdoor protection (galvanised and double epoxy-lacquered).

A L63 H81 D53

B L48 H81 D53



AUREA

designed by Sacha Lakic

183

A



B



C



A L200 H75 D100
Dining table in reclaimed solid oak with double-sided insert in brushed stainless steel on the top.

B L55 H88 D54
C L200 H45 D45
Chair and bench in reclaimed solid oak.
Cushions optional.

rocheboboïs
CONTRACT

MADAME O

designed by Marcello Ziliani



Dining table and chair with a tubular structure in epoxy lacquered steel (many colours available), glass top. Three dimensions available.

A L50 H90 D62 h140
B H75 Ø110

SEQUOIA

designed by Erwan Peron



Cocktail tables in lacquered steel and laser-cut top, in black, white or grey. Indoor or outdoor use.

A L80 H75 D75 C L80 H33 D75
B L53 H50 D50



DOC

designed by Fred Rieffel

187



Pedestal table in lacquered steel (5 colours), top with walnut finish or in black stained wood. Outdoor version with top in white Corian®.

L46 H50 D26

rocheboboïs
CONTRACT

MAH JONG OUTDOOR

designed by Hans Hopfer



Jean Paul Gaultier Composition. Upholstered in fabrics designed for outdoor use. The modular system lends itself to endless arrangements and is made up of seat cushions (95 x 95 x H.19 cm), straight and corner backrests (H. 53 cm) and lounge chair elements. All elements are padded, tufted and stitched by hand. Bases in lacquered openwork metal with cataphoresis treatment and a white or grey finish. Seat and back cushions in Dryfeel foam.



INFORMEL

designed by Hans Hopfer

191

A



B



Sofa and armchair in outdoor stretch fabric. Seat, back and armrests in Dryfeel foam.

A L236 H75 D103 h138
B L107 H75 D103 h138

rocheboboïs
CONTRACT

SUNSET

designed by David Rockwell



Lounge chair, structure in lacquered aluminium with integrated casters. Seat in back in Batyline® canvas or wood-effect slats. Articulated backrest and magazine rack.

L210 H32 D81

TEMPS CALME OUTDOOR

designed by Studio Roche Bobois



Modular sofa upholstered in outdoor fabrics. Seat and back cushions in Dryfeel foam and polyester fibres. Structure in solid okoume and okoume plywood. HR elastic strap suspension.

L411/191 H87 D104 H139



L A M P S

FLOU

designed by Sophie Larger



Suspension, floor lamp and table lamp with matte white aluminium diffusers, finished in a Canaletto walnut veneer.

- A L100 H208 D35
- B L65 H45 D13
- C L59 H85 D13

LUNARIA

designed by Carlo Zerbaro



Floor lamp with matte black lacquered structure and eight blown glass spheres with an alabaster-effect finish.

- A H195 Ø24
- B H165 Ø24

AGATA

designed by Lorenza Bozzoli



Floor lamp and table lamp with lampshade in white glass. Matte black, brass or chrome structure with black lacquered metal detailing.

- A H133 Ø35 C H35 Ø20
- B H105 Ø35 D H55 Ø20

ARENZANO

designed by Ignazio Gardella



Table lamps with structure in satin brass or black steel and shade in white glass.

- A H56 Ø28
- B H34 Ø22

UNFOLD

designed by Alexandre Dubreuil



Table lamp and floor lamp in black lacquered steel and black base with reflectors in hand-pleated fabric.

A L50 H72 D18
B L100 H190 D20

CACTUS

designed by Fabrice Berrux



Suspension, floor lamp and table lamp with ring diffusers in hand-wrapped white ribbon. Integrated LED lighting.

A L175 H3 D85
B L50 H51 D15
C L40 H41 D15
D L85 H175 D20



Indoor/outdoor portable lamp with alabaster diffuser and a black- or gold-finished metal base with black or chocolate handle topstitched leatherette.

H23 Ø15

rocheboboïs
CONTRACT

VIBRATO

designed by Cédric Ragot



Floor lamp with structure and base (Ø 50 cm) in black lacquered steel.
Pivoting top. Integrated LED lighting.

L239 H277 D50

NOMADE

designed by Alessio Bassan



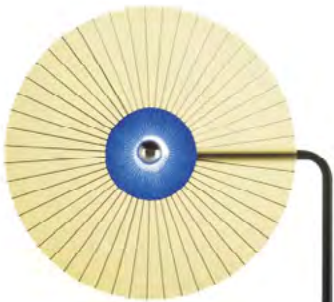
Suspension, floor lamp and wall lamp with three swivel arms and diffusers
in black lacquered aluminium. Structure and base in black lacquered steel.

A L330 H100
B L185 H218

C L206 H230 D45

RAYS

designed by Marta Bakowski



A



C



B

Floor lamp, table lamp and wall lamp with rod and base in steel with black epoxy lacquer. Reflector in hand-woven acrylic glass.

A L70 H181 D13 C Ø50 H16
B L35 H51 D8

MEI

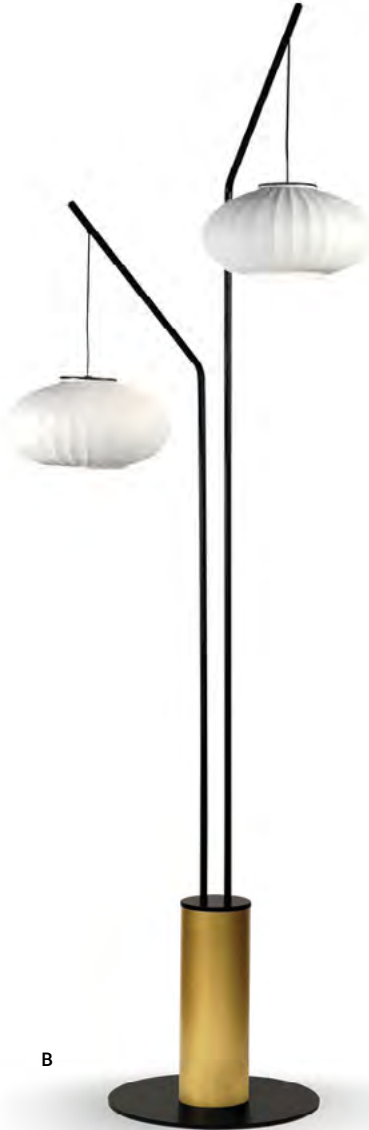
designed by Nahtrang Disseny



C



A



B

Floor lamp, table lamp and suspension with base, tubular leg and rod in gold or black lacquered metal. Lampshade in rippled ceramic.

A L20 H70 D35
B L30 H202 D102

C Ø60 H220

CHARLESTON

designed by Clarisse Dutraive



Floor lamp and table lamp with structure in satin black metal, diffuser in fused glass and satin methacrylate.

A L27 H170 D23 C L15 H50 D12
B L27 H160 D23

CHROMA

designed by Arturo Erbsman



Floor lamp and table lamp with structure in black lacquered steel and reflectors in coloured plexiglass.

A L61 H184 D40
B L44 H49 D15



MARIPOSA

designed by Marcel Wanders

Floor lamp, table lamp and suspension with lampshade in steel with supermirror finish or in striped black and white cotton. Globe in blown and sanded pyrex glass.

A L55 H40 D48
B L195 H230 D55

C L70 H55 D55
D L55 H40 D48

rocheboboïs
CONTRACT

OMSK

designed by Pierre Dubois & Aimé Cécil



Table lamp in antique-finish molten glass: silver with polished titanium or gold with brushed brass.

H51 Ø25

TREE & PEBBLE

designed by Raphael Navot



Floor lamp and table lamp with base in solid ash and shade in cotton.

A H190 D32
B L50 H46 D20

NONETTE

designed by Cédric Ragot



Floor lamp and table lamp in ceramic with double enamelling, alabaster interior.
Other colours available.

A L50 H44 D20
B L63 H160 D25

FLEUR DE COTON

designed by Alessio Bassan



Floor lamps and suspension made of blown Pyrex glass spheres
on a stainless steel structure.

A L235 H240 P50
B L50 H237 P35

C L50 H197 P35
D Ø35 H161

MOI NON PLUS

designed by Margaux Keller



Floor lamp with base in rippled ceramic with ecru lacquer.
Structure in stainless steel with a satin brass finish and spheres in blown and sandblasted Pyrex glass.

L44 H162 D23

BIBA

designed by Lorenza Bozzoli



Suspension with structure in polished brass and globes in white glass.

L20 H100 D30

MINI BEAM

designed by Cédric Ragot



Suspension, floor lamp and table lamp with cone diffuser in milky white blown Venetian glass. Structure in steel with champagne finish.

A L25 H127 D25 C L26 H250
B L25 H67 D25

NEIL

designed by Xavier Solé



Suspension, table lamp and floor lamp with base and structure in black or gold lacquered metal. Shade in alabaster.

A L21 H50 D19 C Ø21 H53
B L21 H120 D28

OMINO

designed by Davide Monopoli



Floor lamp with structure in matte black lacquered steel. Blown glass lamp shade with double black ring.

L229 H226 D49

ALONSO

designed by Carlo Zerbaro



Floor lamp with shade in lacquered perforated aluminium. Diffuser in blown and sandblasted Pyrex glass. Base, fixed rod and adjustable arm in matte black lacquered steel. Outdoor version available.

L145 H227 D70

ATOM

designed by Cédric Ragot



Suspension, floor lamp and table lamp with circular arcs in lacquered or chrome-plated aluminium. Polycarbonate diffusers. Structure in steel with a black, white or chrome lacquer.

A Ø60
B Ø60 H182

LIBRETTO

designed by MEMO design



Suspension, table lamp and floor lamp made of tubes in ribbed Pyrex glass and a structure in satin browned steel.

A L90 H38 D30
B L46 H40 D21
C L61 H170 D30

NEGRESKO

designed by Pierre Dubois & Aimé Cécil

► INDEX



Floor lamps and table lamp in bronze patina and polished brass. Base in black-stained wood.

A L80 H180 D20 C L55 H80 D15
B L80 H155 D20

MEDUSA

designed by Carlo Zerbaro

A

B

Floor lamp and suspension with curved arms in brass creating an electric rail with light sources fitted with diffusers in blown and sandblasted Pyrex glass. Leg, central element and round base in matte black lacquered steel.

A L90 H1180
B L90 H190

rocheboboïs
CONTRACT



RUGS

YUMI

designed by Messieurs

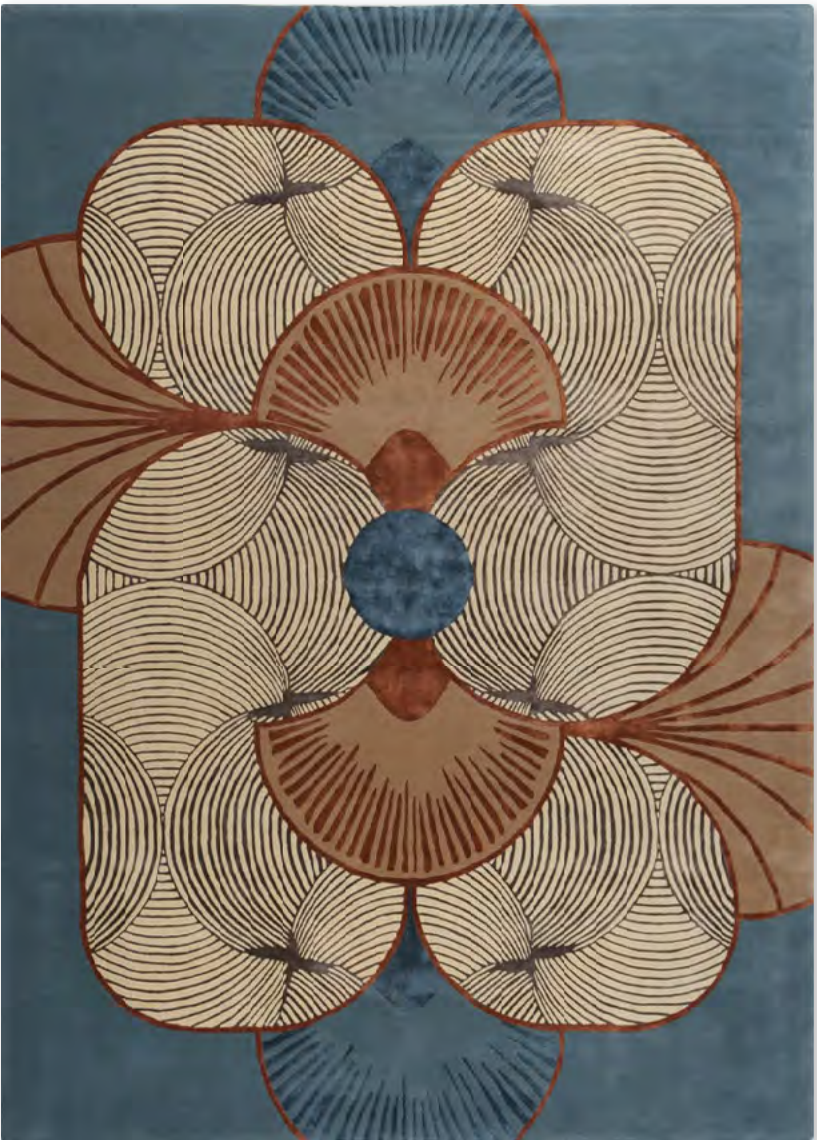


Hand-tufted rug in 100% vegetable silk.

L200 H300 / L250 H350

EVENTAIL

designed by Messieurs



Hand-tufted rug in 70% wool and 30% vegetable silk.
Velvet density: 3,5 kg/m².

L200 H300 / L250 H350

SHARK BAY

designed by Yann Arthus-Bertrand



Hand-tufted rug in 70% New Zealand wool and 30% Tencel® depicting a photo of sand banks in Haridon Bight bay, Peron peninsula, Australia.

L200 H300 / L250 H350

CHOTT MEROUANE

designed by Yann Arthus-Bertrand



Hand-tufted rug in 70% New Zealand wool and 30% Tencel® representing a photo of the salt lake between Biskra and El Oued in Algeria.

L200 H300 / L250 H350

EQUINOXE

designed by Elizabeth Leriche



Hand-tufted rug in 100% New Zealand wool. 100% cotton weft yarn. Ø280 / Ø300 / L350 H250
Velvet density: 5.4 kg/m².

EMPREINTE

designed by Maison n°20



Tufted and printed rug in 100% polyamide. Velvet density: 1.347 kg/m². Ø300 / Ø400

COQUELICOT

designed by Fabrice Berrux



Tufted and printed rug in 100% silky polyamide. L302 H320 / L151 H159 / L110 H117 / L90 H95

AQUARELLE



Tufted and printed rug in 100% silky polyamide. L200 H300

TUTTI FRUTTI

designed by Joana Vasconcelos



Tufted rug in 100% wool. L200 H300 / L250 H350

ISIS

designed by Joana Vasconcelos



Tufted and printed rug in 100% polyamide. Ø300 / Ø280

TOUR EIFFEL

designed by Collection Jean Cocteau



Hand-tufted rug in 100% New Zealand wool with pattern from the work "PROFIL A LA TOUR EIFFEL" L200 H300

PARIS

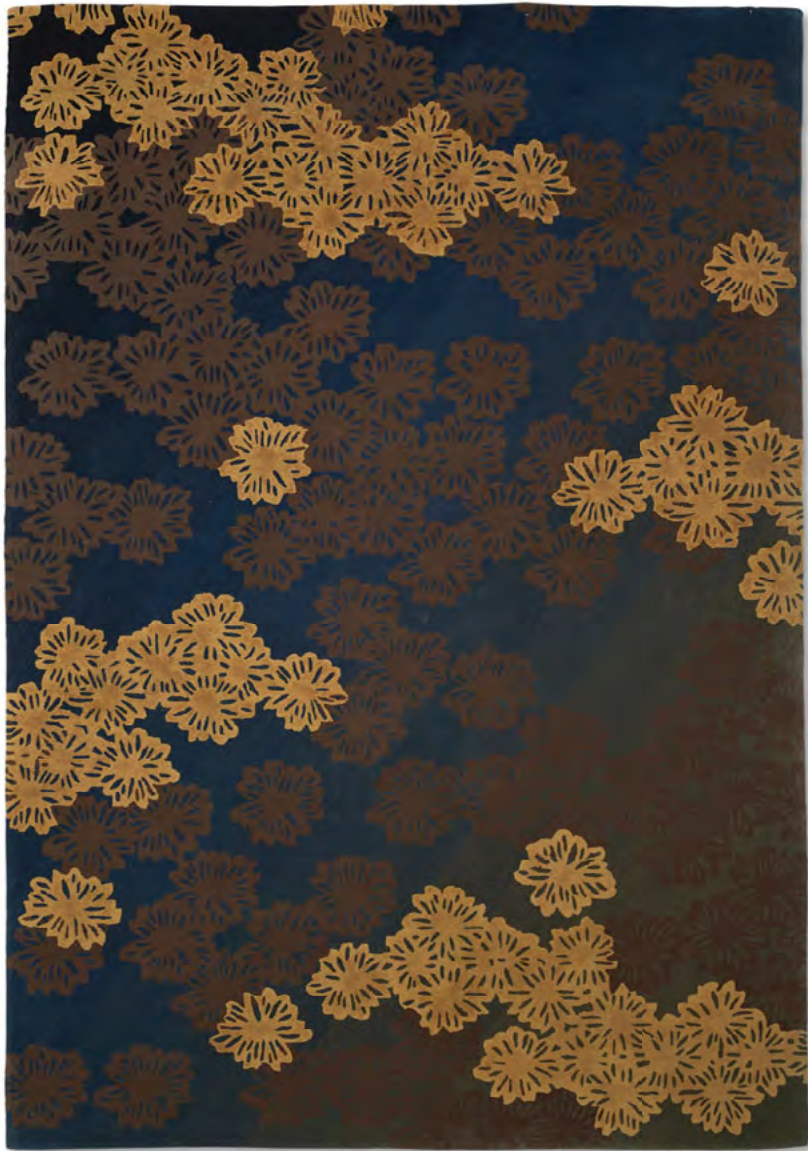
designed by Marcel Wanders



Hand-tufted rug in 100% wool. Velvet density: 3.50 kg/m². L200 H300 / L250 H350

KIRIKORI

designed by Kenzo Takada



Hand-tufted rug in 100% New Zealand wool. L250 H350

FUYOU-YASHI

designed by Kenzo Takada



Hand-tufted rug in 60% New Zealand wool and 40% vegetal silk, depicting small gold palm fronds on a background of gradient colours. Hand-embossed motifs.

L200 H300 / L250 H350

LILY BRUSH



Tufted rug in 60% vegetable silk and 40% wool. L200 H300 / L250 H350 / Ø300

FUSION SUNSET

designed by Raphael Navot



Hand-knotted rug in 100% hand-spun, natural wool. Velvet density: 2.8 kg/m². L200 H300 / L250 H350



MIRRORS

TURBINE

designed by Renaud Thiry



Mirror in bronze. Small fins in varnished, stained oak. Ø130 / 100 / 70

VENUS GOLD

designed by Annemie Vanzielegheem



Round mirror depicting the planet Venus. Screen-printed mirror with hand-applied gold metal leaves. Ø105

MERLIN

designed by Alnoor

► INDEX



Mirror with central witch-eye design. Blue, grey and silver mirrors; marble-effect black Marquina ceramic with smoked and silver mirrors; or Canaletto walnut with bronze and silver mirrors.

Ø130 D13 / Ø90 D7

ELA

designed by Sophie Larger



Oval mirror with off-centre geometric screen print. Cut with water jet technology.

L70 H134 D2

rocheboboïs
CONTRACT

MANDALA

designed by Sophie Larger

► INDEX



Oval mirror with frame of three layered, off-centre circles in black or bronze metal.

L113 H130 D3

PARIS PANAME

designed by Bruno Moinard



97 mm-thick mirror on structure in sycamore veneer on MDF, brushed or dark brushed bronze trims.

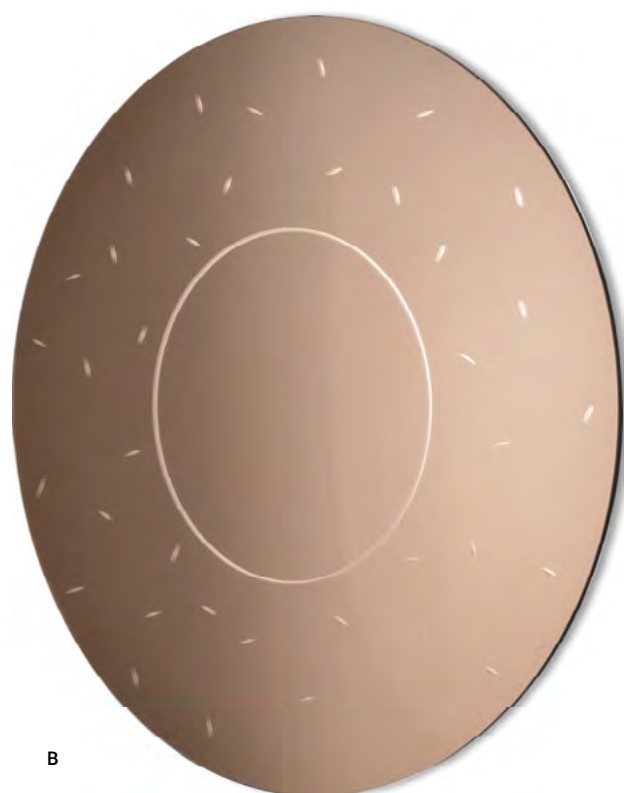
Ø120 D10



A

A L80 H147 D46

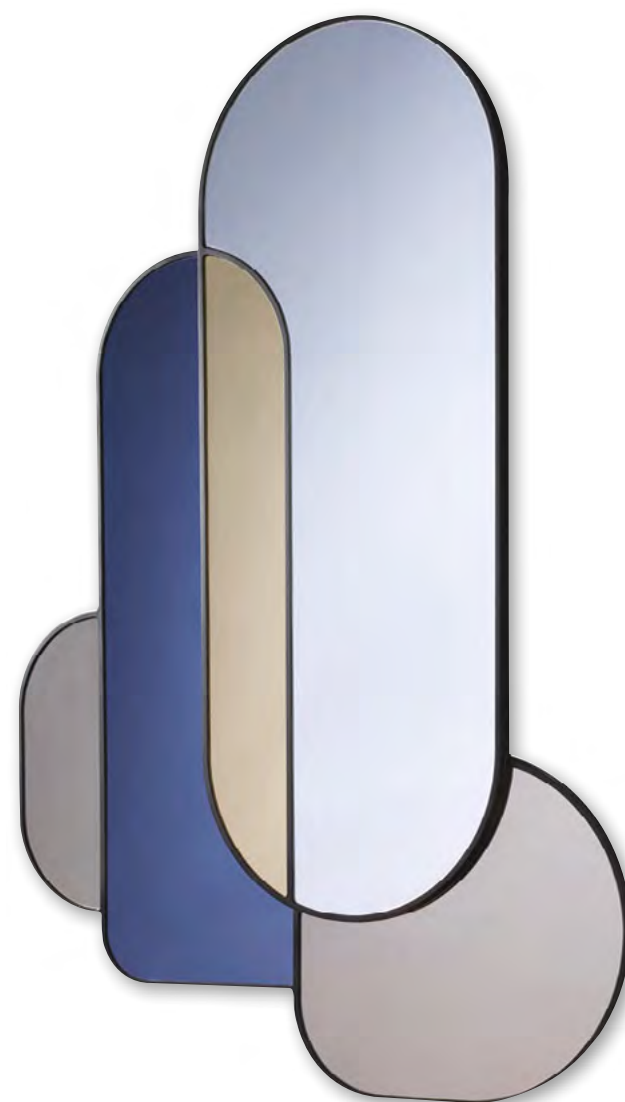
Free-standing or wall-mounted engraved oval mirror with black lacquered steel frame. Reflective surface in smoked grey colour.



B

B Ø110 D5

Engraved round mirror with pink reflective surface.



Mirror composed of different reflective surfaces: silver and bronze mirroring and gold and midnight blue PMMA. Black lacquered MDF frame.

L92 H140 D3

NEGRESKO

designed by Pierre Dubois & Aimé Cécil

► INDEX



Mirror in bronze patina and polished brass, metal structure. L98 H130 D5

FOREST

designed by Sophie Larger



Round standing mirror with base and vertical bars in metal with golden finish. L44 H60 D10



COMPLETED PROJECTS

EXTRACT

GOURMET BAR

designed by Sacha Lakic and made by Roche Bobois for Fauchon Hotel



KWERK HAUSSMANN

Coworking space, Paris 8

► INDEX



LES JARDINS DE COPPELIA

Hotel, restaurant and spa, Honfleur



PALAZZO BIANCA CAPPELLO

Hotel, Florence



PALAZZO RIDOLFI

Hotel, Florence



HOTEL CHOUCHOU

Hotel, Paris



HOTEL BOWMANN

5-star Hotel, Paris



FAQ

Who is the Roche Bobois Contract Department for?

All professionals managing projects in the hotel, restaurant and office space industry, as well as architects, decorators and influencers.

What are your rates?

We have no fixed rates, since our collections are highly varied and customisable. However, we are very responsive and will answer any price inquiries promptly.

What are your terms of business for professionals?

Our terms of business are adjusted with respect to the recommended retail prices, factoring in the quantities and characteristics of each project.

What are your manufacturing lead times?

Our usual lead times are between 12 and 14 weeks for our workshops (excluding delivery time).

Do you deliver worldwide?

Our network of more than 250 showrooms worldwide equips us with many local intermediaries able to deliver to the vast majority of locations.

What are your payment terms?

As we deal with customised orders, we require a deposit of 50% of the total order amount, including taxes, to start the procurement process and launch production.

Can I personalise your products? (dimensions, upholstery, etc.)

The majority of our models are available in many dimensions and finishes. We will also assess all requests for bespoke products.

Where are your products manufactured?

Our products are manufactured exclusively in Europe.

Do you comply with the standards applicable to hotels / public access buildings? (fire safety, etc.)

Yes, we comply with the most stringent standards applicable in the countries to which our products are exported. British fire safety standards, California's standards regulating formaldehyde emissions: Roche Bobois adapts to the restrictions laid down by the relevant legislations and, by extension, to those applicable to your project.

How can I obtain 2D and 3D files of your products?

We have a platform that centralises our 2D and 3D resources, as well as our product photos and tear sheets.

Do you provide samples?

Yes. We provide the necessary samples at the time of confirming a project's finishes.

Where can I see your completed projects?

Click on [this link](#) for a full presentation of our Contract department's completed projects.

