

50 YEARS

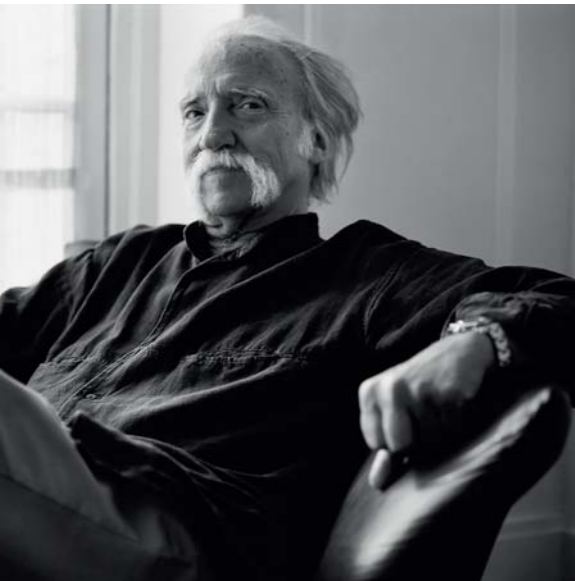
MAH JONG SOFA



French Art de Vivre

rochebobo
PARIS

1971
Hans Hopfer
imagines the Mah Jong



Painter, sculptor and designer...
Hans Hopfer has designed several sofas that have become iconic pieces in Roche Bobois collections.

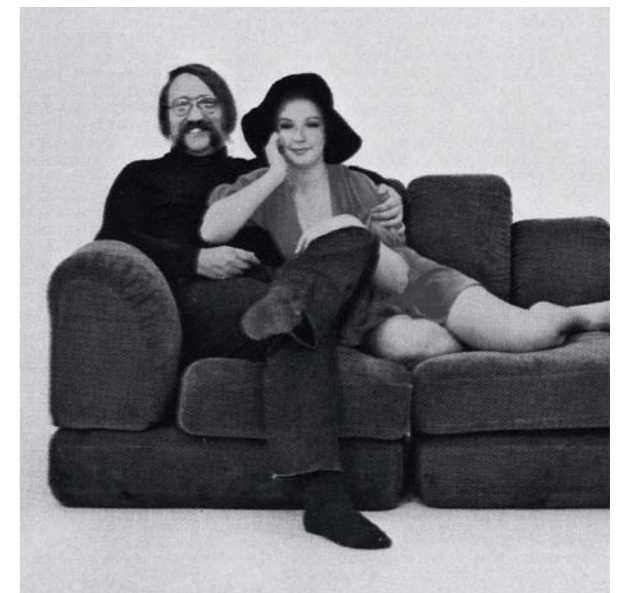
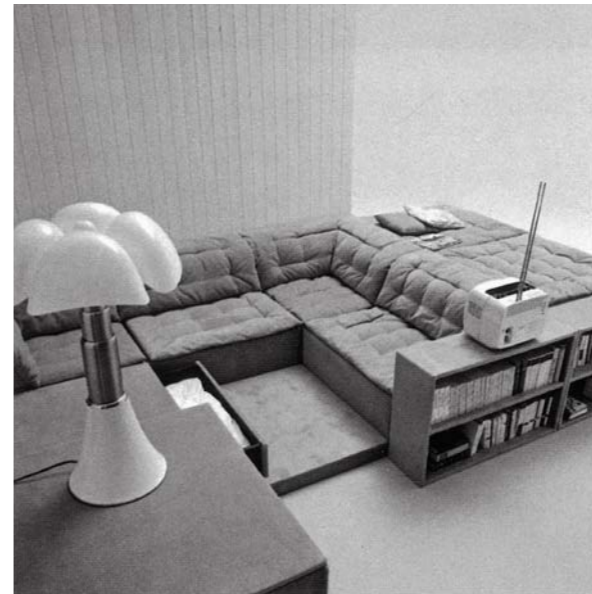
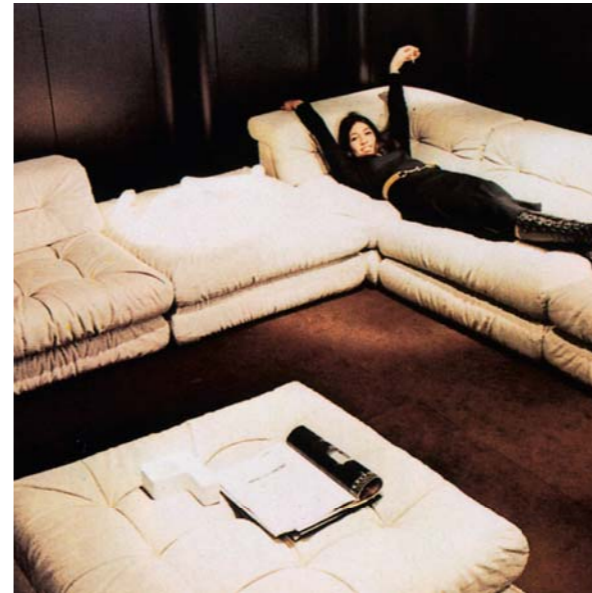
In the 1970s, his innovative and open-minded approach to comfort had a profound influence on the way people furnished and arranged their living spaces.

In 1971, Hopfer created the Mah Jong, a modular sofa that champions total freedom of form and function.

Starting with three basic elements that can be combined or stacked together, the Mah Jong allows limitless options of composition, ranging from simple to highly complex: armchair, sofa, lounge chair, bed or living space. It allows for all positions and uses, reflecting the enthusiasm and vitality of the era from which it hails.

This year, Roche Bobois celebrates 50 years of the Mah Jong sofa.

To mark this milestone, the Mah Jong is dressed in new designer fabrics and set on elegant platforms that enhance its silhouette and make it even more comfortable. Avant-garde at the time of its creation, this ultra-modular sofa is an iconic piece today.





The Mah Jong, a unique savoir-faire.

The Mah Jong cushions are handmade in Italy, in a dedicated workshop using processes and techniques similar to those of the haute couture fashion industry. Designed in the style of a luxury mattress, each component is individually hand-stitched, with the utmost attention paid to detail. This artisanal workmanship showcases the designer fabrics that dress the Mah Jong.



The Mah Jong,
free-form composition. The seats

The Mah Jong was created to provide freedom of form and function. By encouraging people to arrange the elements to what suits them best, the Mah Jong can change the landscape of a living room, offering a whole new approach to the way we view and arrange our living spaces.

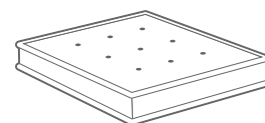
The possibilities are limitless: play around with heights and redefine the original purpose of the sofa if you wish, to completely reorganise your living space and unleash your creativity.

The three basic elements of the Mah Jong can be stacked, arranged next to each other or grouped together – whatever works best.

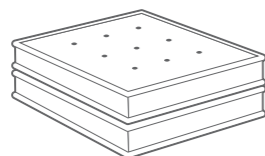
The combination of seat cushions, straight back rests and corner elements is ideal for adjusting the height and creating the desired composition: corner sofa, straight sofa, lounge chair or day bed.



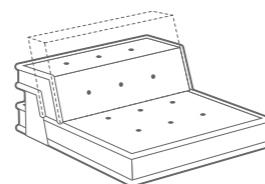
“Mah Jong Sofa 3D” app  



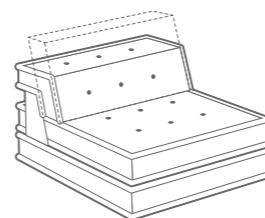
Ottoman
L. 95 x H. 19 x D. 95 cm



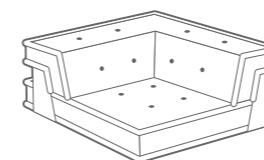
2 Ottomans
L. 95 x H. 38 x D. 95 cm



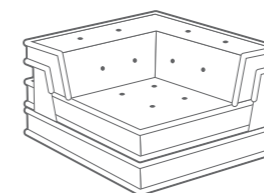
Armless Chair
with or without adjustable headrest
L. 95 x H. 53/75 x D. 95 cm



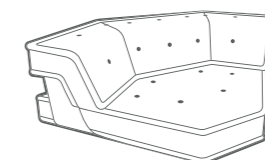
Armless Chair
with or without adjustable headrest + ottoman
L. 95 x H. 72/94 x D. 95 cm



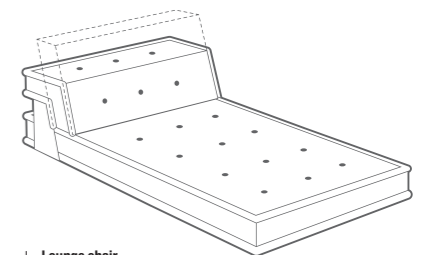
Corner seat
L. 95 x H. 53 x D. 95 cm



Corner seat + ottoman
L. 95 x H. 72 x D. 95 cm



Panoramic corner seat cushion
+ panoramic corner back cushion
L. 170 x H. 19 x D. 109 cm
+ L. 171 x H. 53 x D. 70 cm



Lounge chair
L. 159 x H. 59/75 x D. 95 cm

The Mah Jong,
free-form composition. The platforms

To celebrate its 50th anniversary,
the Mah Jong is now set on elegant platforms
that raise the seats to make the sofa
even more comfortable.
True to the Mah Jong's original identity,
this new design makes the piece
more modern than ever.
The options are virtually endless and allow
everyone the freedom to arrange the sofa
however they wish – with or without clear
surfaces to place books, trays, lamps
or other decorative objects.



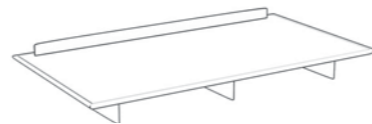
“Mah Jong Sofa 3D” app  



1-seater platform
L. 97 x H. 25 x D. 103 cm



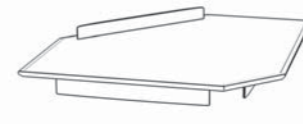
1.5-seater platform
L. 145 x H. 25 x D. 103 cm



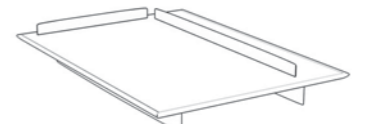
2-seater platform
L. 194 x H. 25 x D. 103 cm



Square corner platform
L. 103 x H. 25 x D. 103 cm

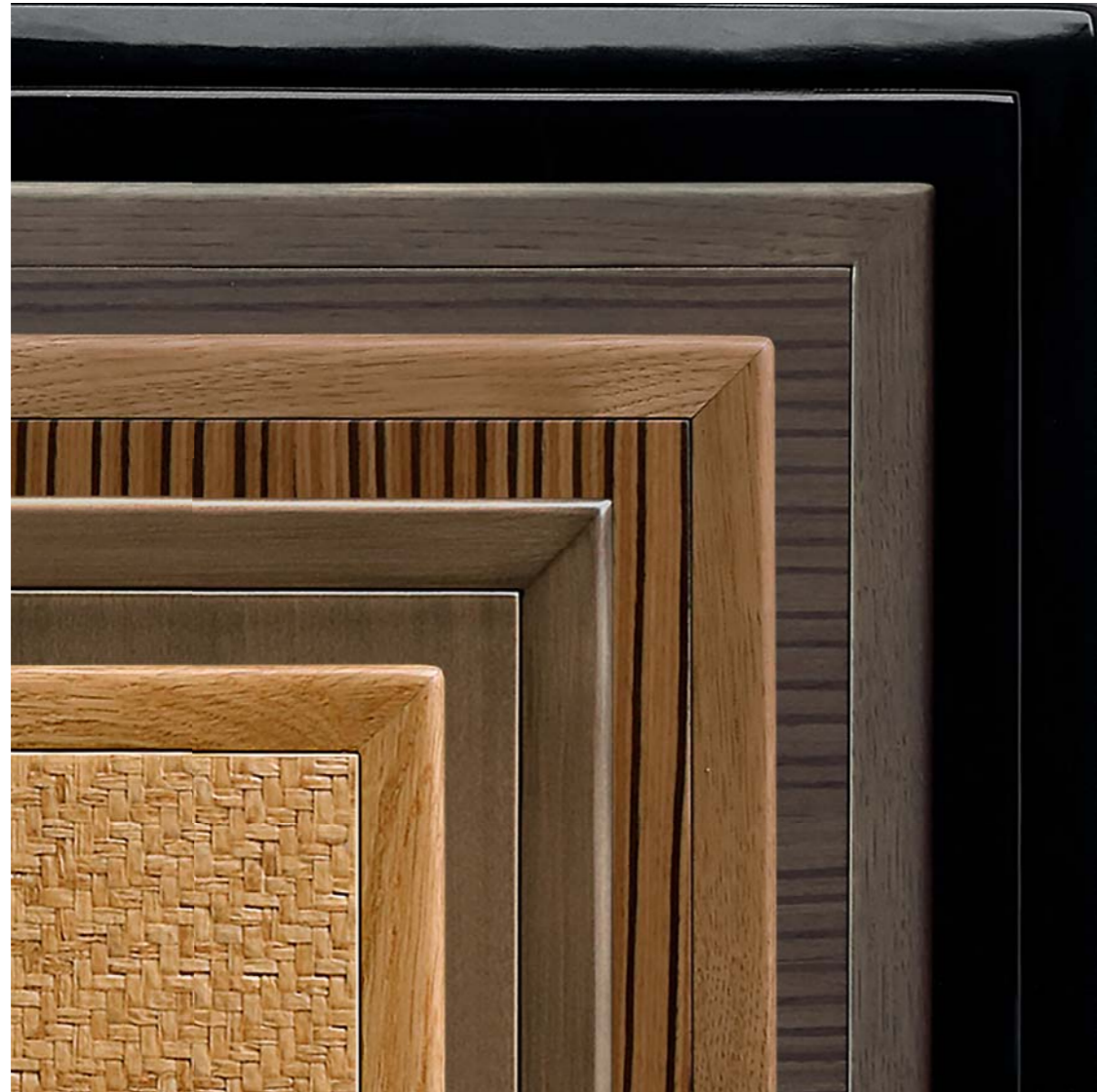


Panoramic corner platform
L. 182 x H. 25 x D. 116 cm



Lounge chair with side platform
L. 125 x H. 25 x D. 172 cm

The Mah Jong,
free-form composition. The finishes



The platforms come in finishes that match the colourways of the Mah Jong fabrics: stained wood in warm or clear tones, and several shades of lacquer with deep reflections.

A collection of cocktail tables matching the platforms complements this new Mah Jong set-up.



"Mah Jong Sofa 3D" app  



50
YEARS
MAH JONG SOFA

Fabrics designed by
Kenzo Takada
Page 14

Fabrics by
Missoni Home
Page 26

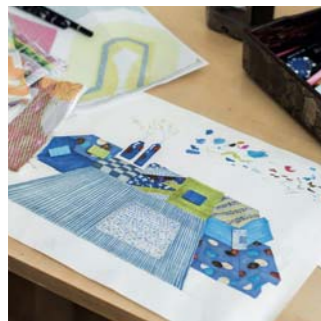
Fabrics by
Jean Paul Gaultier
Page 38



Fabrics designed by

Kenzo Takada

Free and daring in his approach Kenzo Takada – “the most Parisian of Japanese designers” – has designed exceptional fabric collections to upholster the Mah Jong. His creations reflect the graphic and cultural hallmarks of his style: East meets West, colour mastery, and subtle patterns for ever more original and elegant harmonies.



Mah Jong. Modular element sofa, designed by Hans Hopfer.
Upholstered in fabrics designed by **Kenzo Takada**, Matsuri collection, Umi version.
Platforms in stained wood, Moonstone finish.
Fuyou-Yashi. Rug, designed by **Kenzo Takada**.





Mah Jong. Modular element sofa, designed by Hans Hopfer.
Upholstered in fabrics designed by **Kenzo Takada**, Matsuri collection, Irune version.
Platforms in lacquered wood, matte bronze patina finish.
Fuyou-Yashi. Rug, designed by **Kenzo Takada**.

Fabrics designed by
Kenzo Takada



Mah Jong. Modular element sofa, designed by Hans Hopfer.
Upholstered in fabrics designed by **Kenzo Takada**, Matsuri collection, Natsu version.
Platforms in stained wood, Twine finish.
Ooyashi. Rug, designed by **Kenzo Takada**.

Fabrics designed by
Kenzo Takada

Fabrics designed by
Kenzo Takada

Mah Jong. Modular element sofa, designed by Hans Hopper.
Upholstered in fabrics designed by **Kenzo Takada**, Nô Gaku collection, Asa version.

Aka and **Shiro Hanawa** ceramics collection
and **Gara_Juutan** rug, designed by **Kenzo Takada**.



Mah Jong. Modular element sofa, designed by Hans Hopper.
Upholstered in fabrics designed by **Kenzo Takada**, Nô Gaku collection, Yoru version.
Aka ceramics collection and **Gara_Juutan** rug, designed by **Kenzo Takada**.





Mah Jong. Modular element sofa, designed by Hans Hopfer.
Upholstered in fabrics designed by **Kenzo Takada**, Nô Gaku collection, Hiru version.
Aka ceramics collection and **Gara_Juutan** rug, designed by **Kenzo Takada**.

Fabrics designed by
Kenzo Takada

Fabrics designed by
Kenzo Takada



Mah Jong. Bed, designed by Hans Hopfer & Marco Fumagalli.
Upholstered in fabrics designed by **Kenzo Takada**, Nô Gaku collection, Yoru version.

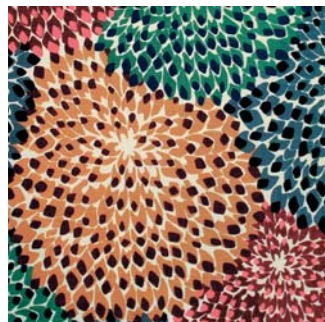
Mah Jong. Bed, designed by Hans Hopfer & Marco Fumagalli.
Upholstered in fabrics designed by **Kenzo Takada**, Matsuri collection, Irune version.
Platforms in lacquered wood, matte bronze patina finish.





Fabrics by
MISSONI HOME

Missoni Home is Italian fashion at its most elegant and exuberant. Their iconic zigzag motifs, refined fabrics, and floral and graphic patterns dress, reveal and energise each Mah Jong cushion.



Mah Jong. Modular element sofa, designed by Hans Hopper.
Upholstered in **MISSONI HOME** fabrics, Constellation collection.
Platforms in stained wood, Alezan finish.
Antrim. Rug, designed by **MISSONI HOME**.





Mah Jong. Modular element sofa, designed by Hans Hopfer.
Upholstered in **MISSONI** HOME fabrics.

Domino. Rug, designed by **MISSONI** HOME.

Mah Jong. Bed, designed by Hans Hopfer & Marco Fumagalli.
Upholstered in **MISSONI** HOME fabrics and plain Indy fabric.





Mah Jong. Modular element sofa, designed by Hans Hopper.
Upholstered in **MISONI** HOME fabrics.
Rockford. Rug, designed by **MISONI** HOME.

Fabrics by
MISONI HOME

Mah Jong. Modular element sofa, designed by Hans Hopfer.
Upholstered in **MISSONI** HOME fabrics.
Domino. Rug, designed by **MISSONI** HOME.





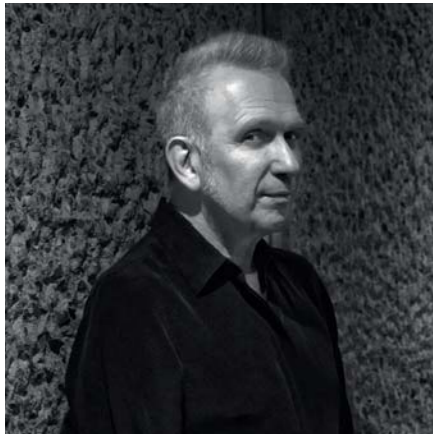
Mah Jong. Modular element sofa, designed by Hans Hopfer.
Upholstered in **MISSONI** HOME fabrics.

Rockford. Rug, designed by **MISSONI** HOME.

Fabrics by
MISSONI HOME

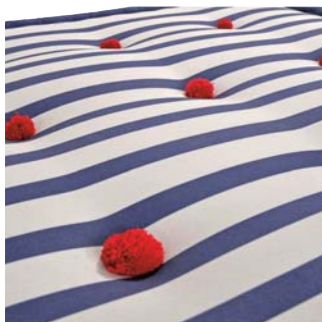
Mah Jong Outdoor. Modular element sofa, designed by Hans Hopfer.
Upholstered in fabrics suitable for outdoor use.
Platforms in CDP-coated, lacquered openwork metal.





Fabrics by
**Jean Paul
GAULTIER**

When Jean Paul Gaultier's vision meets the creative savoir-faire of Roche Bobois, this gives rise to highly personal interpretations of the Mah Jong. The French designer reinvents and transforms his own trademarks. A poetic, sophisticated and slightly offbeat collection that effortlessly connects the worlds of fashion and design.



Mah Jong. Modular element sofa, designed by Hans Hopper.
Upholstered in **Jean Paul Gaultier** fabrics, Couture collection.
Platforms and cocktail tables in high-gloss lacquered wood, Ink (Encre) finish.



Mah Jong. Modular element sofa, designed by Hans Hopfer.
Upholstered in **Jean Paul Gaultier** fabrics, Couture and Matelot collections.
Dunkerque. Rugs, designed by **Jean Paul Gaultier**.





Mah Jong. Modular element sofa, designed by Hans Hopfer.
Upholstered in **Jean Paul Gaultier** fabrics, Matelot collection.
Dunkerque. Rugs, designed by **Jean Paul Gaultier**.

Fabrics by
**Jean Paul
GAULTIER**



Mah Jong. Modular element sofa, designed by Hans Hopper.
Upholstered in **Jean Paul Gaultier** fabrics, Matelot collection.

Dunkerque. Rug, designed by **Jean Paul Gaultier**.

Mah Jong. Bed, designed by Hans Hopfer & Marco Fumagalli.
Upholstered in **Jean Paul Gaultier** patterned fabrics and plain Cabaret velvet fabric.

Ben Hur armchair, trunk-inspired storage unit and "Dizainier" chest of drawers,
designed by **Jean Paul Gaultier**.





Mah Jong Outdoor. Modular element sofa, designed by Hans Hopfer.
Upholstered in **Jean Paul Gaultier** fabrics suitable for outdoor use, *Autour du Monde* collection.
Platforms in CDP-coated, lacquered openwork black metal suitable for outdoor use.

Fabrics by
**Jean Paul
GAULTIER**

50
YEARS

MAH JONG SOFA

French Art de Vivre

rochebobo
PARIS